

Massacre in Moscow

JUDGING BY recent results, this September's world championship clash between Anatoly Karpov and Viktor Korchnoi will find both players in peak form. Russian world champion Karpov steamrolled the super-tournament in Moscow, winning by a 1½-point margin and scoring six out of seven points with the White pieces. Meanwhile, after winning at Lone Pine, Soviet defector Korchnoi stormed a six-player, double-round event in Bad Kissingen, West Germany, with an astonishing nine points from 10 games in a field that included Hort, Seirawan and Sosonko.

There were relatively few surprises in the Moscow tournament, apart from 60-year-old Vassily Smyslov's sudden resurgence. A genuine Western challenge failed to materialise, as neither Seirawan, who preferred to stay with Korchnoi, nor Miles, who had visa problems, participated. The talented young Dutch player Jan Timman played but was horribly off form.

Moscow did, however, help to keep the relative strengths of Karpov and his young Soviet rival Garri Kasparov in perspective. Kasparov, whom Spassky has described as "a very good crocodile", continues to snap at his arch-rival's heels. Almost every game he plays is, as Bobby Fischer's were, full of interest. But if Karpov is secretly terrified of the 18-year-old prodigy from Baku it does not show in his play — which is still as quick, calm and confident as ever.

The final table was: Karpov 9; Smyslov, Kasparov, Polugaievsky 7½; Portisch, Gheorghiu 7; Beliavsky, Balashov 6½; Andersson, Petrosian 6; Torre, Timman, Smejkal 5½; Geller 4.

There are a couple of instructive themes running through this week's entertaining victory by Karpov. One is the way White follows the standard procedure of playing actively with his pieces around the isolated pawn on d4. The other is the way the world champion exploits his opponent's 12th move, cunningly switching his queen and bishop around to forcibly penetrate the Black kingside.

SEMI-TARRASCH DEFENCE

A. KARPOV	J. TIMMAN
1. c4	c5
2. Nf3	Nc6
3. e3	Nf6
4. Nc3	e6
5. d4	d5
6. cxd5	Nxd5
7. Bd3	Be7
8. 0-0	0-0
9. a3	cxd4
10. exd4	Bf6

A major alternative is 10...Nf6, when White's attacking plan would consist of Re1, Bc2 and Qd3, lining up mating threats on h7. I have always preferred these isolated queen's pawn positions for White — although chances may be objectively even, it is usually White, with his active piece play, who has the attacking chances.

11. Be4	Nce7
---------	------

12. Qd3 h6

More normal is 12...g6. We see the dark side of Timman's move in the game continuation.

13. Ne5	Nxc3
14. Qxc3	Nf5
15. Be3	Nd6
16. Bf3	Bd7
17. Qb4	Bb5
18. Rfe1	a5
19. Qb3	Ba6
20. Rad1	Nf5
21. Be4	Nxe3
22. Qxe3	Qd6
23. Bc2!	

Karpov prepares to realign his queen and bishop on the b1-h7 diagonal, and in doing so exposes the drawback of Timman's 12th move. A further subtle point is that the bishop goes to c2 (rather than b1) to keep the rook on d1 well protected.

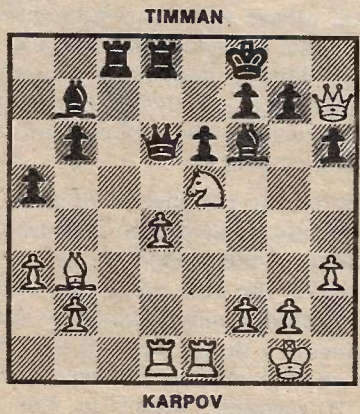
23. ...	Rfd8
24. Qe4	Rac8

Now White can penetrate to h7, hounding Black's king towards the centre — and doom. But 24...G6 was impossible: 25. N×g6! f×g6 27. Q×g6 ch Bg7 28. R×e6 Qf8 29. Rde1 wins, as White threatens 30. Qh7 ch followed by Bg6 mate.

25. Qh7 ch	Kf8
26. h3	

A safety move directed against any back-rank mate threats. Now Timman cannot save himself by simplifying with 26...B×e5 27. d×e5 Qc5, because of the strong reply 28. Rd6!

26. ...	b6
27. Bb3!	Bb7



28. d5!

In characteristic style the world champion takes the simplest path — prise open the e-file and Black's king is doomed. After the apparently strong 28.Ng6 ch f×g6 29. B×e6 instead, Black could possibly complicate matters by 29...Q×e6! 30. R×e6 Kf7 (threatening Rh8 trapping the queen!) 31. R×b6 Be4.

28. ...	Qc7
---------	-----

If 28...e×d5 29. Nd7 ch R×d7 30. Qh8 mate, or 28...B×e5 29. d×e6 Qc7 30. R×d8 ch R×d8 31. e×f7 when there is no defence to 32. Qg8 ch followed by Q×g7.

29. d×e6	R×d1
30. Ng6 ch!	resigns

Total annihilation occurs after 30...f×g6 (30...Ke8 31.Qg8 mate) 31. e7 ch Ke8 (31...B×e7 32.Qg8 mate) 32.Qg8 ch etc.

MURRAY CHANDLER